



**SAFE
WORK**

S SPOT THE HAZARD
A ASSESS THE RISK
F FIND A SAFER WAY
E EVERYDAY

Stats & Facts Manufacturing Agricultural Equipment (Industry Rate Code 31010)

Prepared Feb 21, 2010

WCB 
**Workers Compensation
Board of Manitoba**



Manufacturing Agricultural Equipment

Summary Facts

- 80 assessment rates calculated for 2010.
- 2008 assessable payroll = \$231,711,496 (2009 not available yet)
- 2008 levy = \$5,742,900
- 2010 industry rate category = 200%
- 2010 new firm rate = \$2.39
- 2010 lower boundary rate = \$2.09
- 2010 upper boundary rate = \$10.43
- Levy range for a firm with \$2 million in assessable payroll:
 - \$41,800 versus \$208,600



**SAFE
WORK**

SPOT THE HAZARD
ASSESS THE RISK
FIND A SAFER WAY
EVERYDAY

Manufacturing Agricultural Equipment

Summary Facts Continued

- 29 firms are currently paying the lower boundary rate.
- 8 firms are in a lower rate category and are paying less than the lower boundary rate. (Firms with more than \$7.5 million in assessable payroll can move above or below the industry rate category).
- One firm is at the upper boundary rate.
- Of the remaining 42 firms: 16 are trending up, 23 are trending down and 3 are new firms.

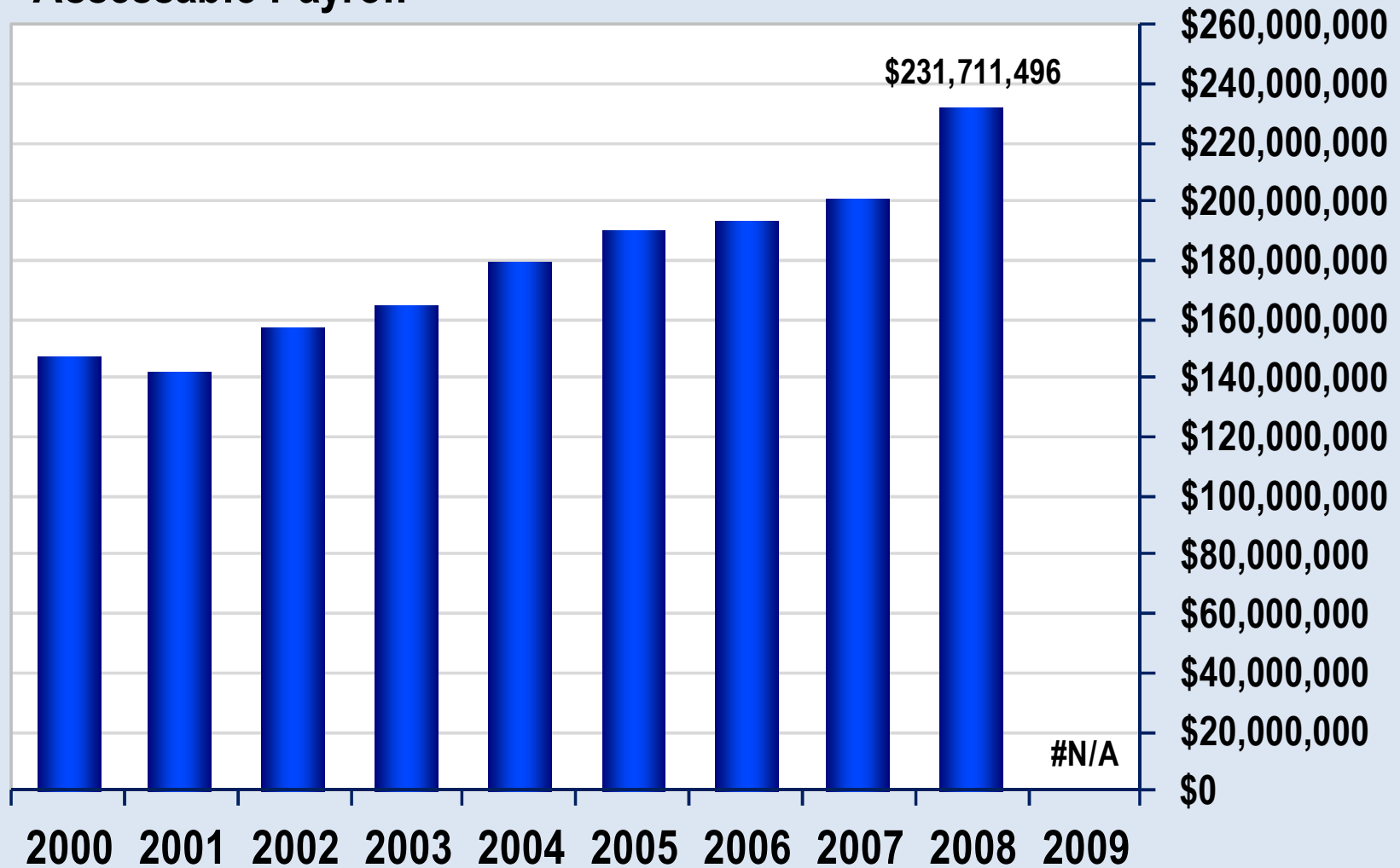


**SAFE
WORK**

SPOT THE HAZARD
ASSESS THE RISK
FIND A SAFER WAY
EVERYDAY

Manufacturing Agricultural Equipment

Assessable Payroll

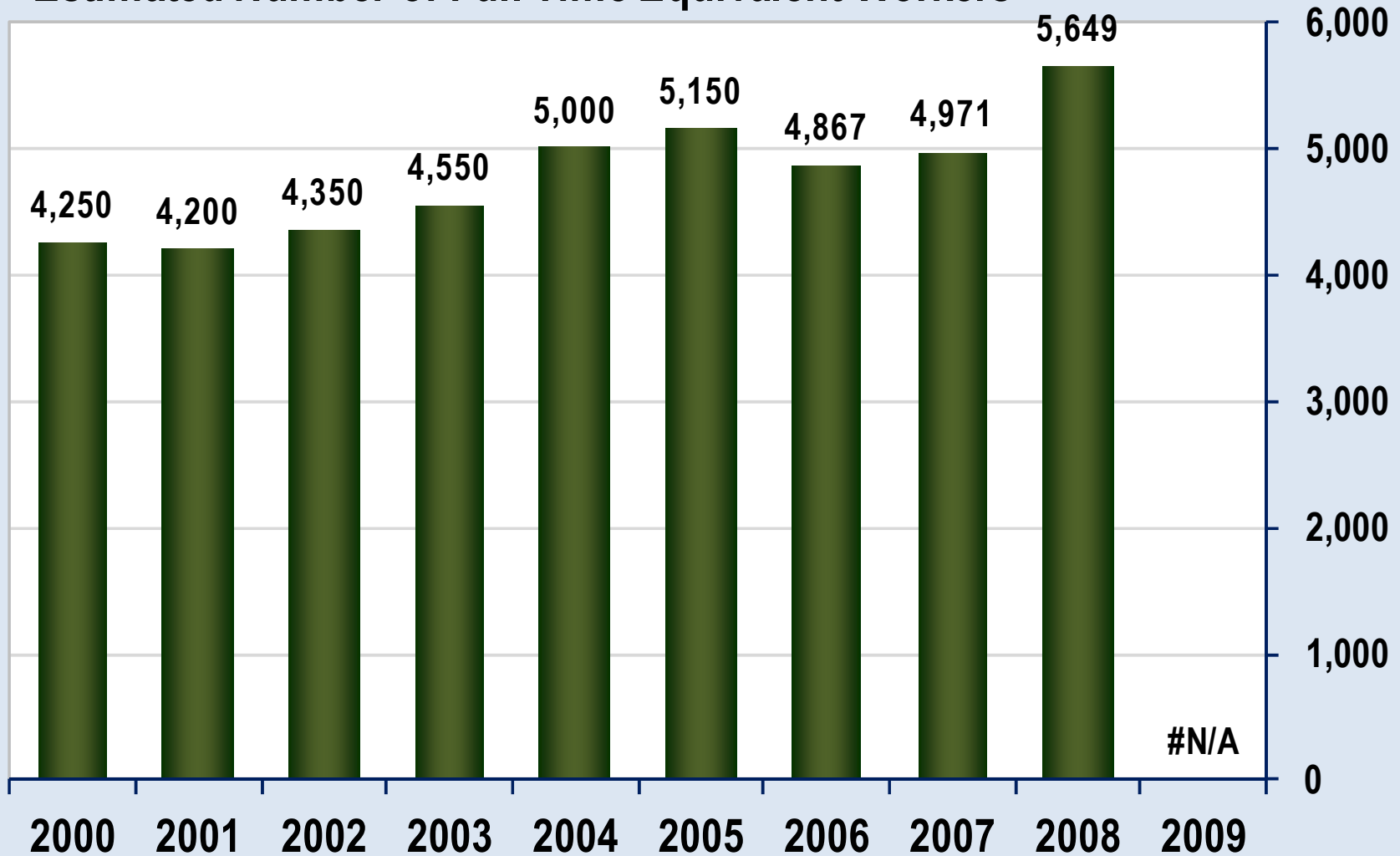


**SAFE
WORK**

SPOT THE HAZARD
ASSESS THE RISK
FIND A SAFER WAY
EVERYDAY

Manufacturing Agricultural Equipment

Estimated Number of Full Time Equivalent Workers

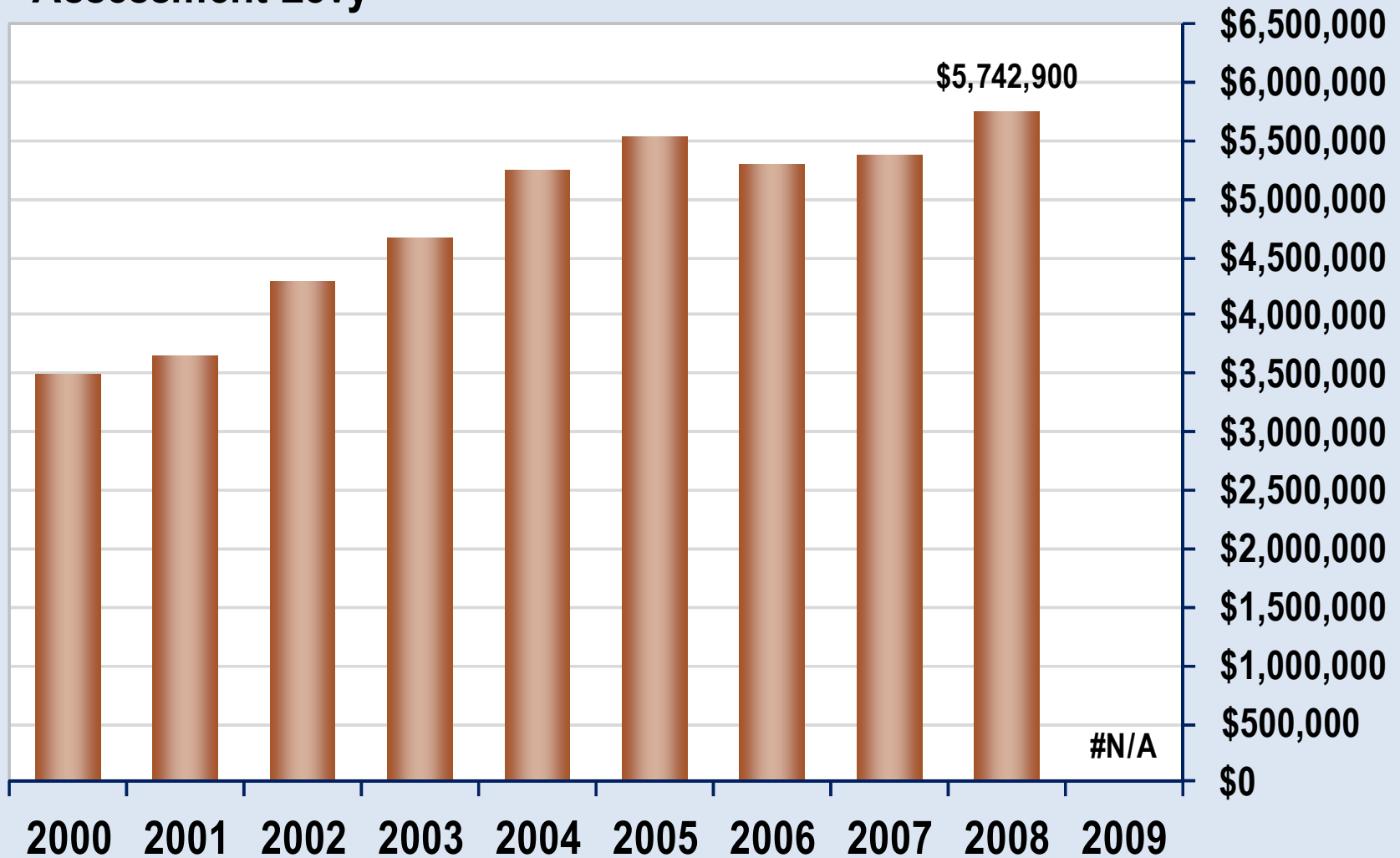


**SAFE
WORK**

SPOT THE HAZARD
ASSESS THE RISK
FIND A SAFER WAY
EVERYDAY

Manufacturing Agricultural Equipment

Assessment Levy



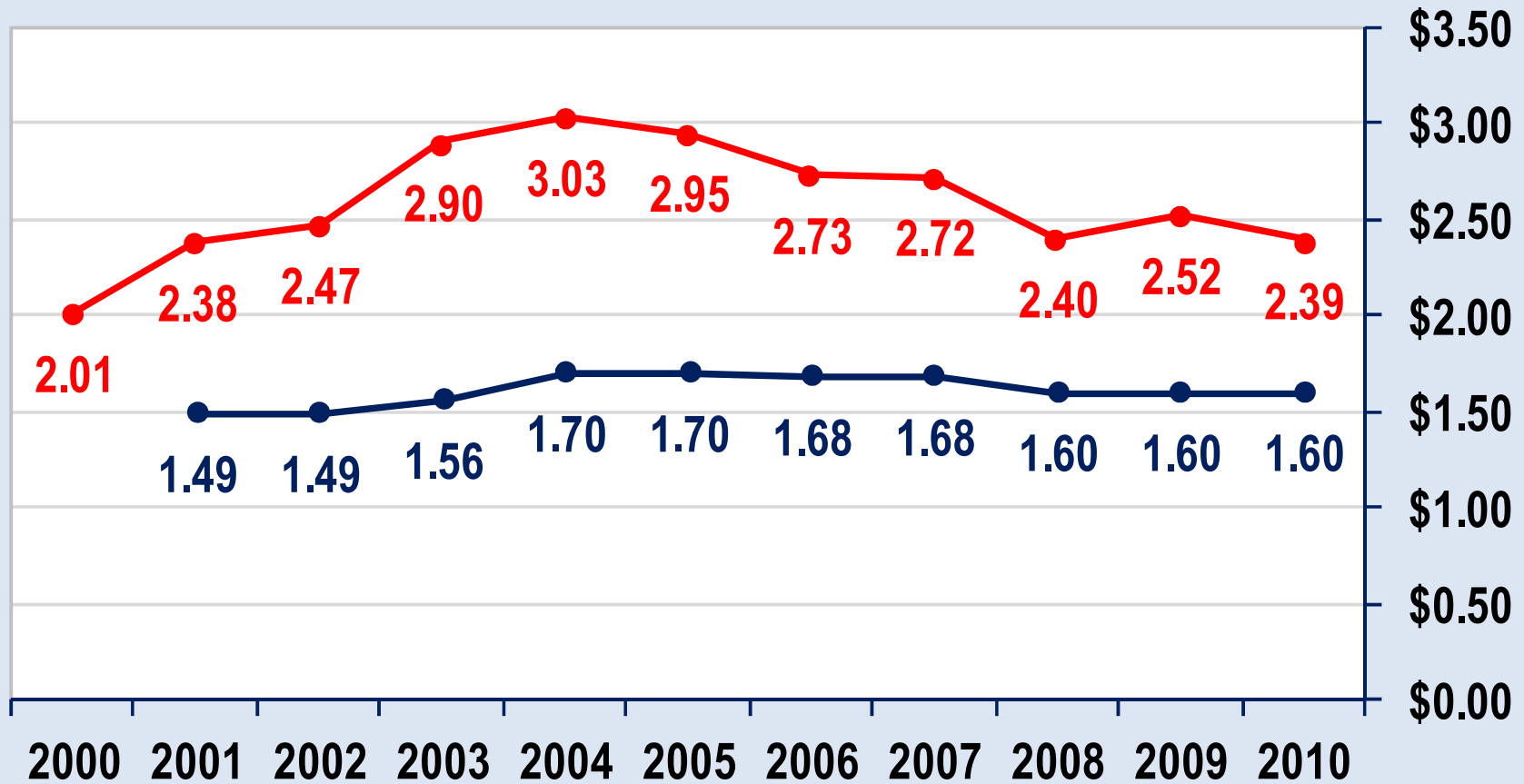
SAFE WORK

SPOT THE HAZARD
ASSESS THE RISK
FIND A SAFER WAY
EVERYDAY

Manufacturing Agricultural Equipment

Rate per \$100 of
Assessable Payroll

—●— Mfg Agricultural Equipment - New Firm Rate
—●— Manitoba Average Rate (Budgeted)



SAFE WORK

SPOT THE HAZARD
ASSESS THE RISK
FIND A SAFER WAY
EVERYDAY

The new firm rate (or industry rate) is the rate assigned to a new firm within the industry. It is an assessable payroll weighted average industry rate calculated within the rate setting model each year.

Manufacturing Agricultural Equipment

Time Loss Injury Rate Per 100 Full Time Equivalent Workers in Manitoba, 2000 to 2008

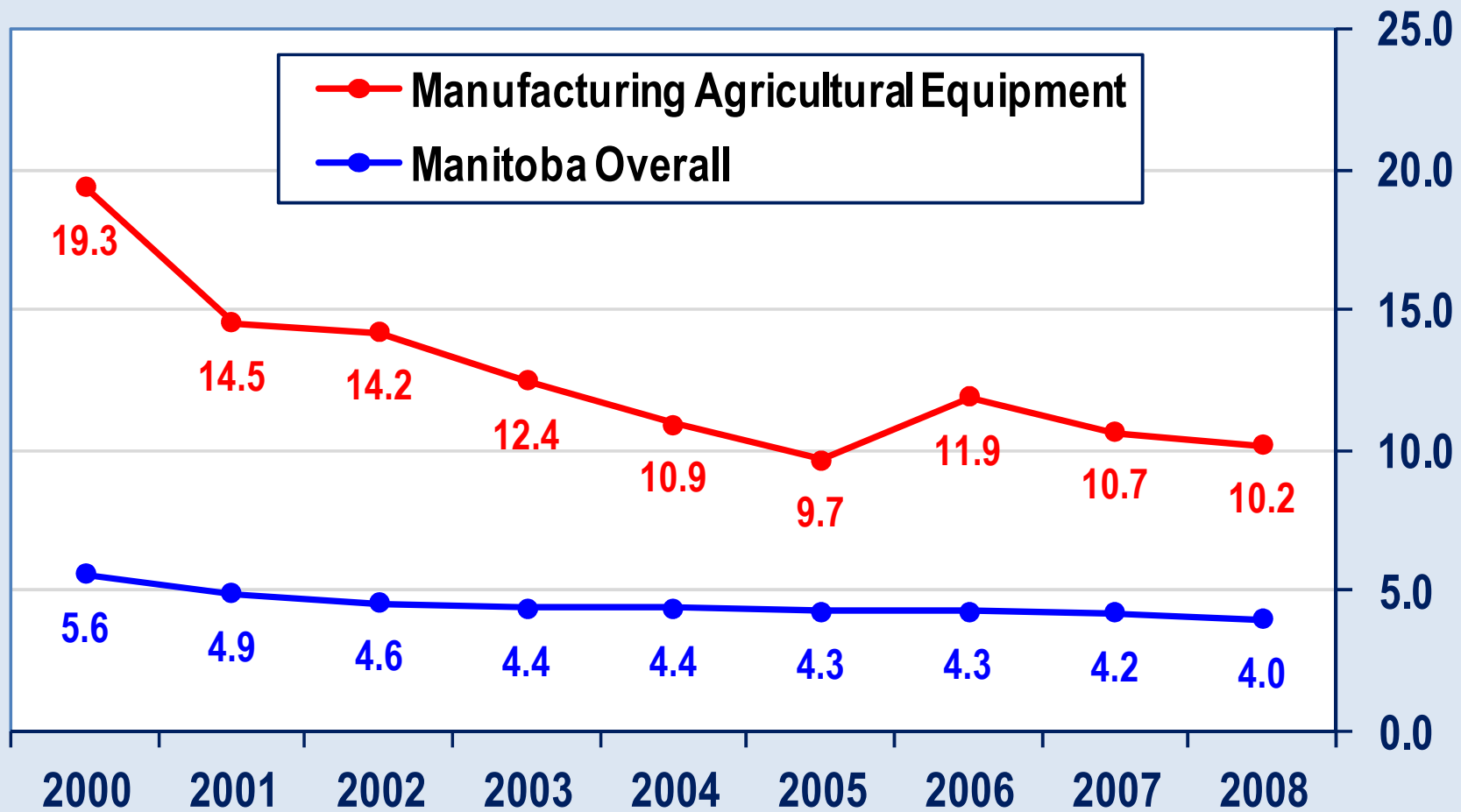


**SAFE
WORK**

SPOT THE HAZARD
ASSESS THE RISK
FIND A SAFER WAY
EVERYDAY

Manufacturing Agricultural Equipment

Time Loss Injury Rate per 100 Full Time Equivalent Workers



**SAFE
WORK**

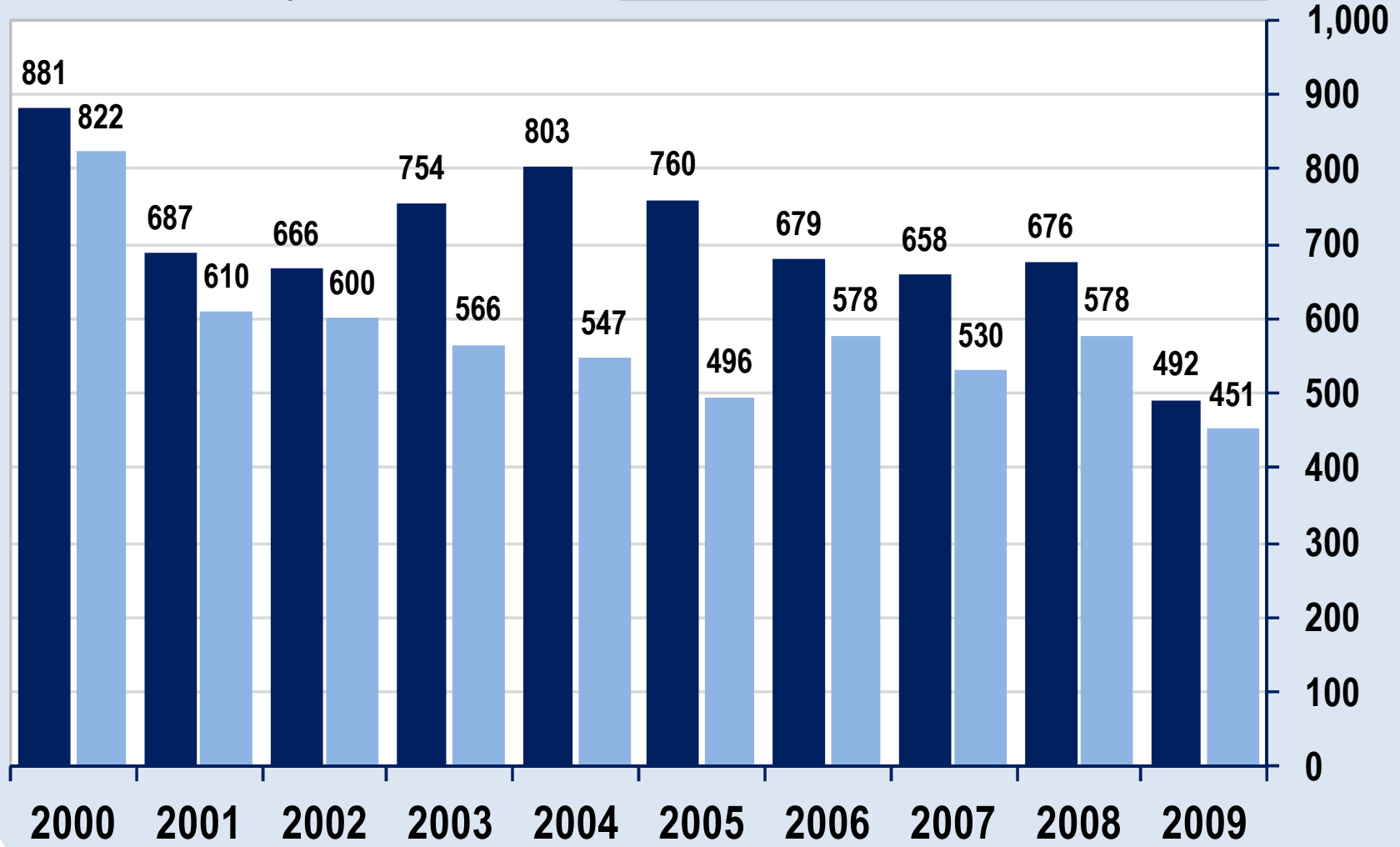
SPOT THE HAZARD
ASSESS THE RISK
FIND A SAFER WAY
EVERYDAY

Manufacturing Agricultural Equipment

Number of Injuries

■ No Time Loss

■ Time Loss

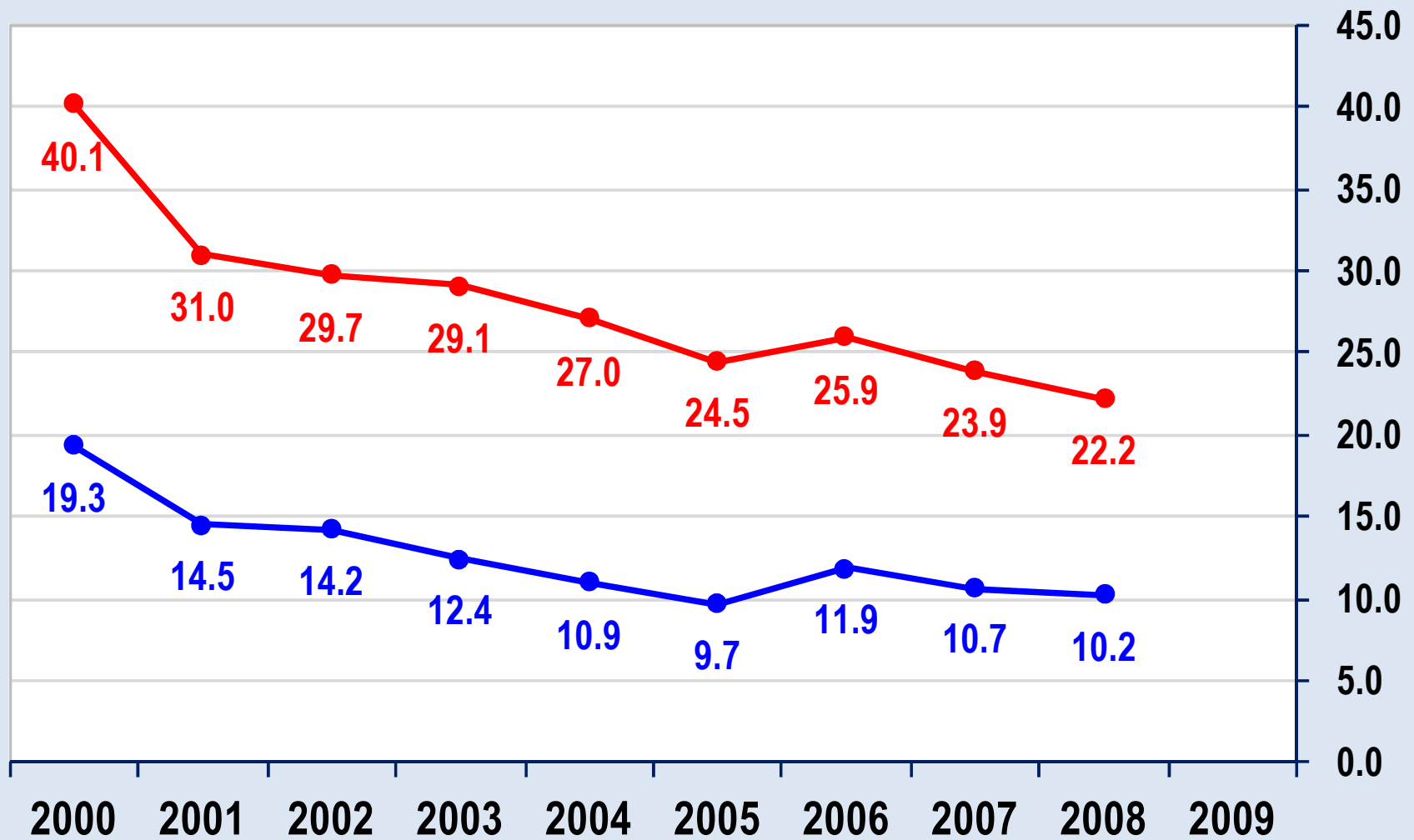


**SAFE
WORK**

SPOT THE HAZARD
ASSESS THE RISK
FIND A SAFER WAY
EVERYDAY

Manufacturing Agricultural Equipment

Injury Rates per 100 FTE Workers



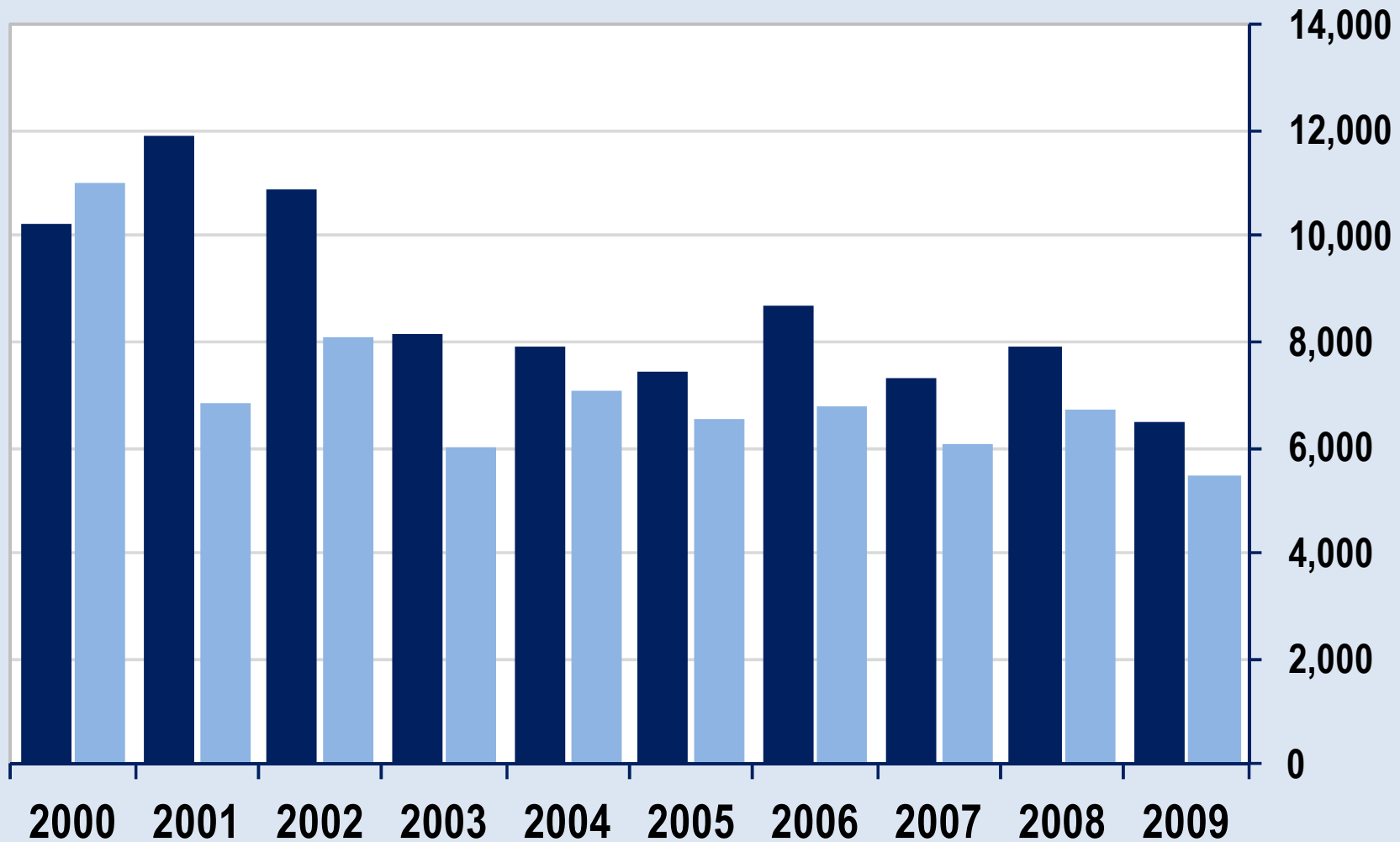
**SAFE
WORK**

SPOT THE HAZARD
ASSESS THE RISK
FIND A SAFER WAY
EVERYDAY

Manufacturing Agricultural Equipment

Number of Days Paid

■ Previous Years' Injuries ■ Current Year Injuries



Figures shown here do not include days paid for workers that have taken out special coverage.

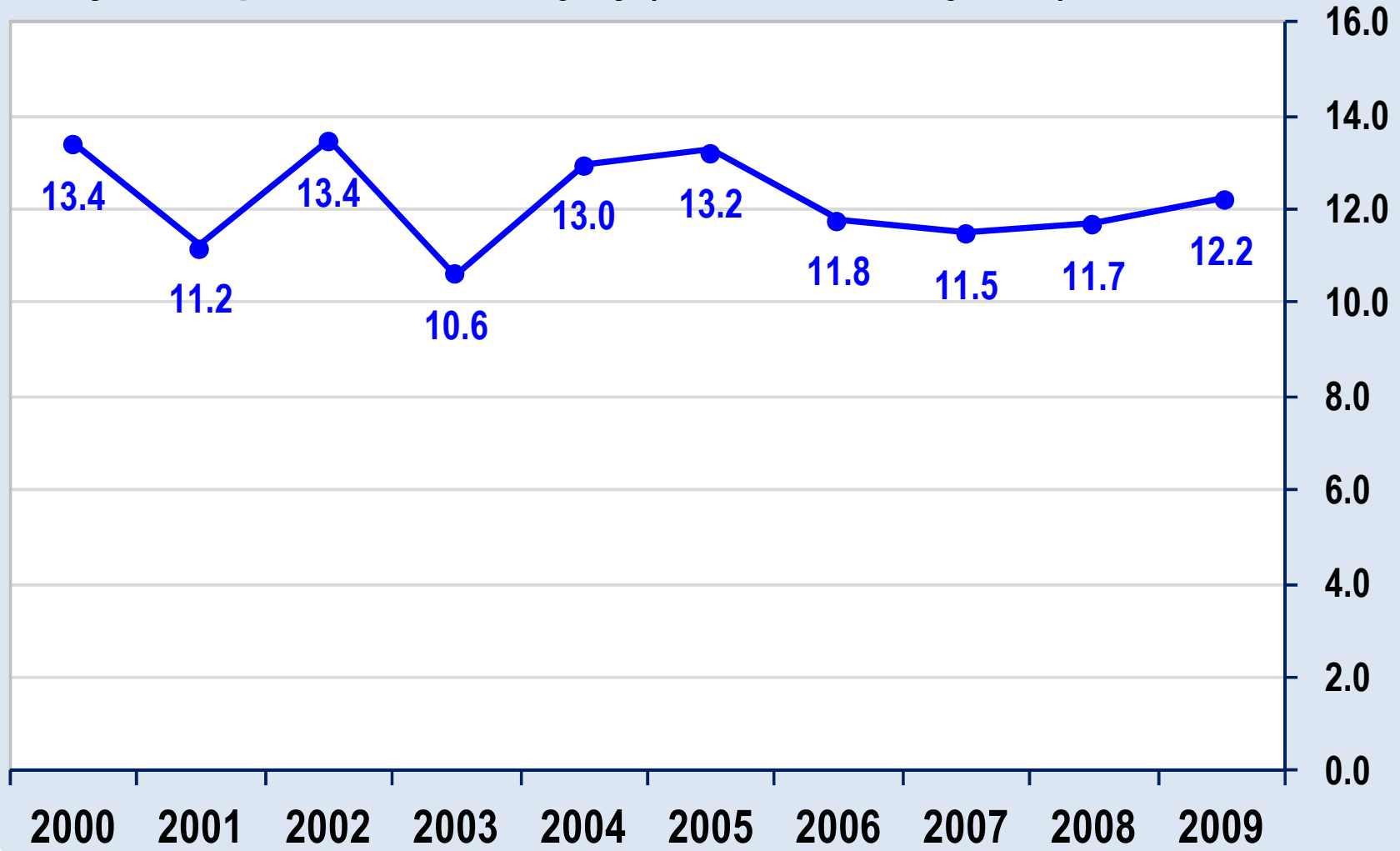


SAFE WORK

SPOT THE HAZARD
ASSESS THE RISK
FIND A SAFER WAY
EVERYDAY

Manufacturing Agricultural Equipment

Days Paid per Time Loss Injury (Current Year Injuries)



Figures shown here do not include days paid for workers that have taken out special coverage.

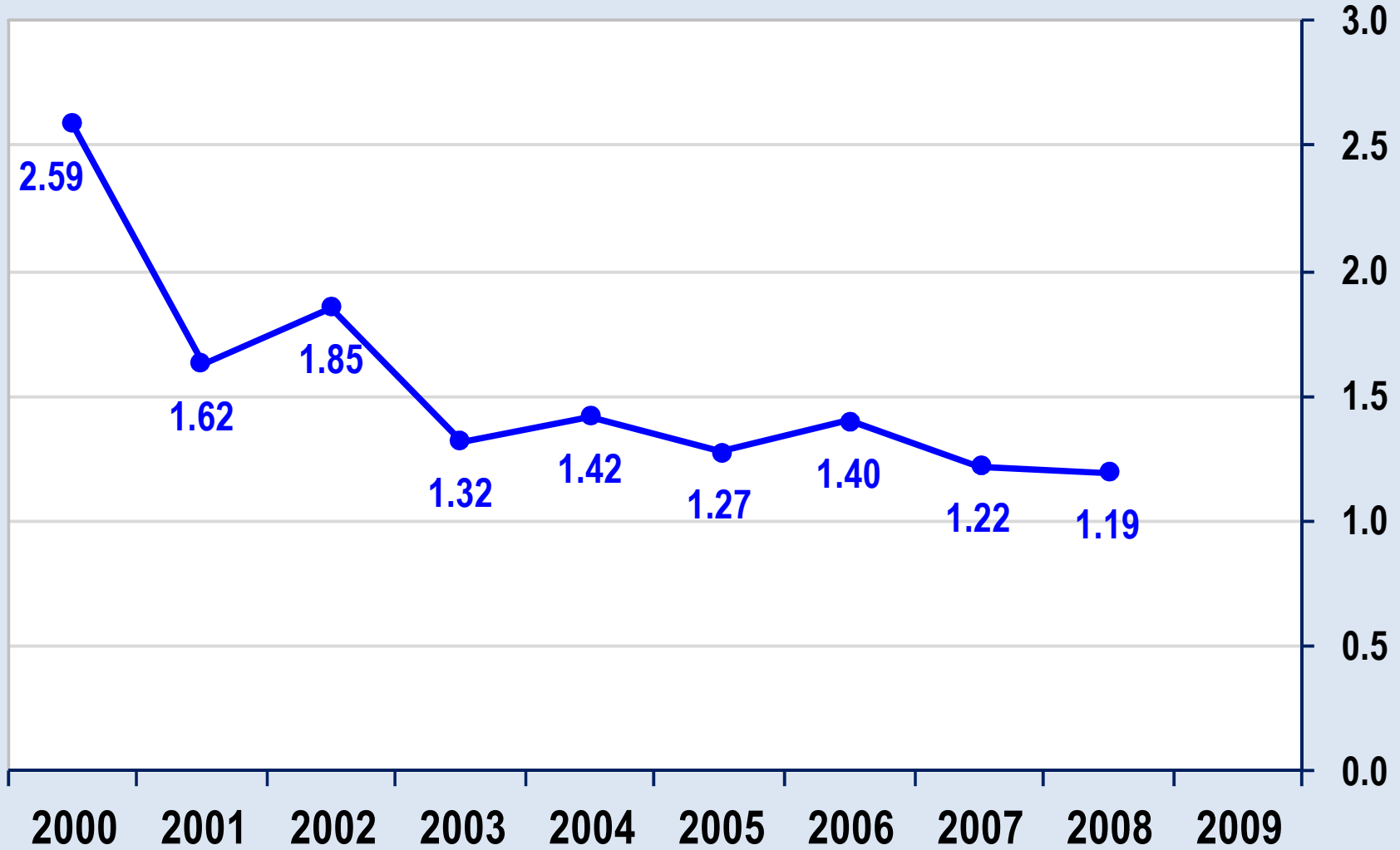


**SAFE
WORK**

SPOT THE HAZARD
ASSESS THE RISK
FIND A SAFER WAY
EVERYDAY

Manufacturing Agricultural Equipment

Days Paid per FTE Worker (Current Year Injuries)



Figures shown here do not include days paid for workers that have taken out special coverage.

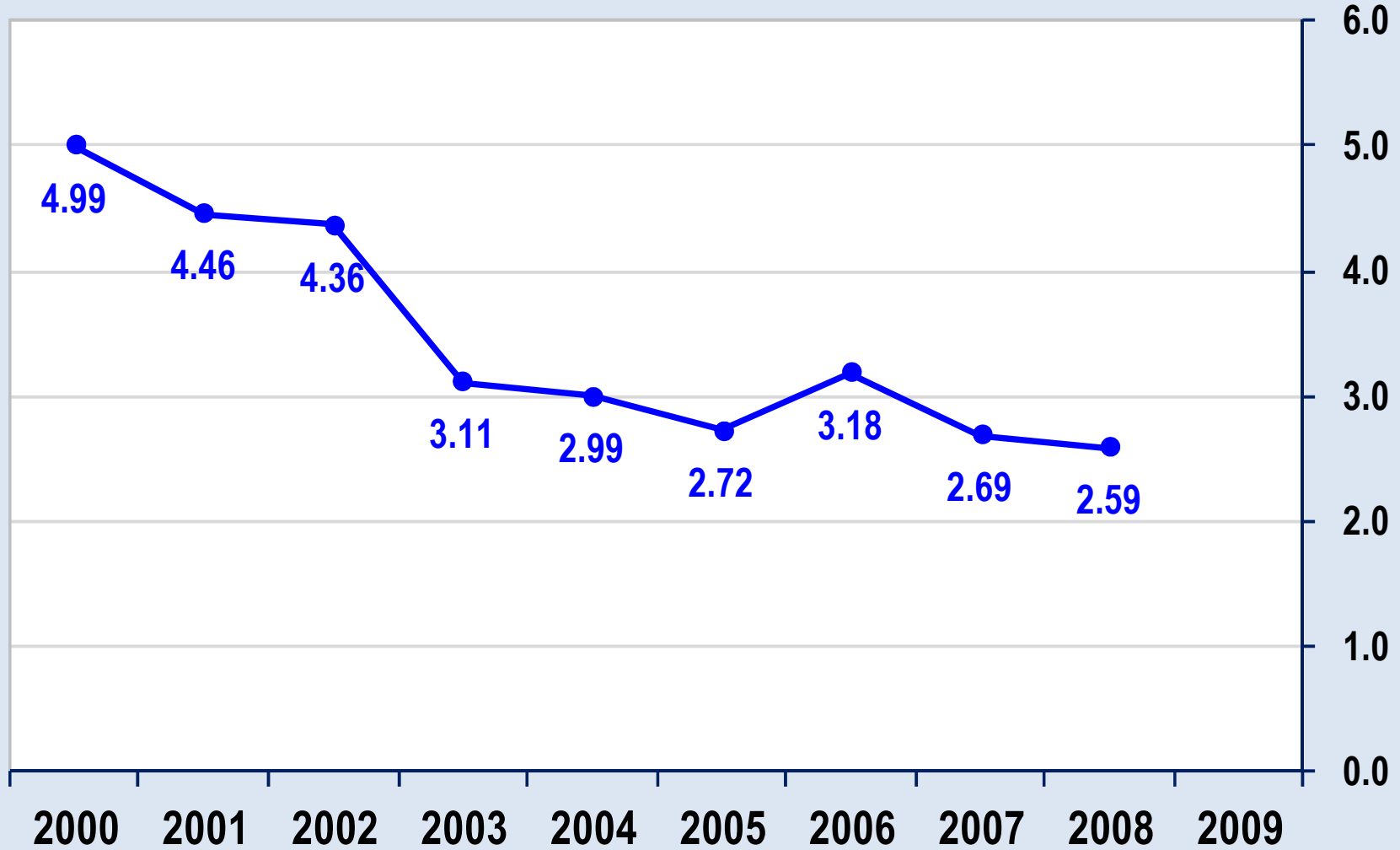


**SAFE
WORK**

SPOT THE HAZARD
ASSESS THE RISK
FIND A SAFER WAY
EVERYDAY

Manufacturing Agricultural Equipment

Total Days Paid per FTE Worker



Figures shown here do not include days paid for workers that have taken out special coverage.



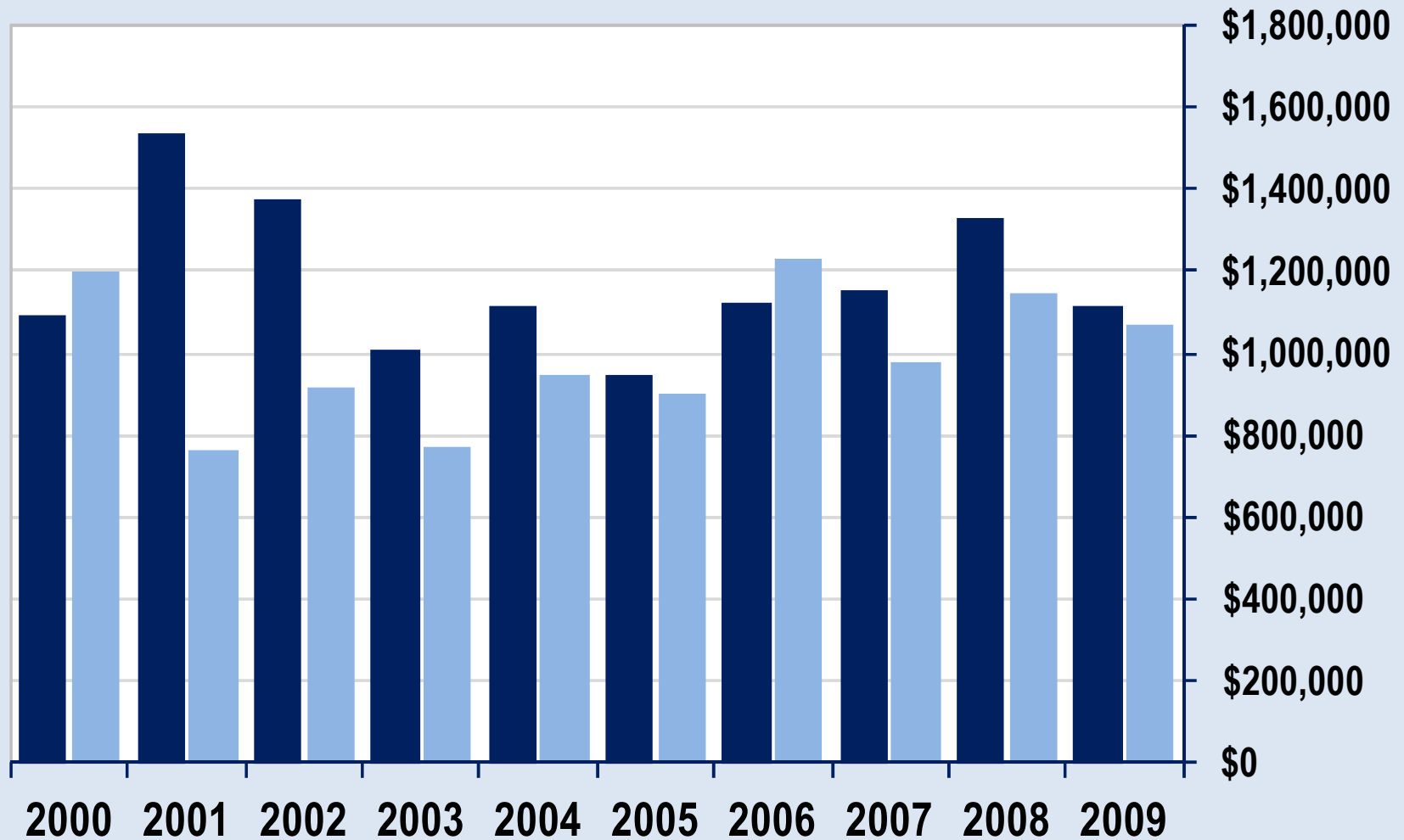
**SAFE
WORK**

SPOT THE HAZARD
ASSESS THE RISK
FIND A SAFER WAY
EVERYDAY

Manufacturing Agricultural Equipment

Direct Injury Costs

■ Previous Years' Injuries ■ Current Year Injuries



Figures shown here do not include workers that have taken out special coverage.



SAFE WORK

SPOT THE HAZARD
ASSESS THE RISK
FIND A SAFER WAY
EVERYDAY

Manufacturing Agricultural Equipment

Definitions and Data Notes

- The sources of data for this report include the annual report, levy detail, paid costs databases and rate setting model.
- The term "injury" or "injuries" used throughout this report encompasses both injuries and illnesses in the workplace.
- The injury counts in this report include accepted claims based on the year that the WCB was notified of the injury except for fatalities which are counted based on the year of acceptance.
- **Total Assessable Payroll:** The amount of workers' earnings that are used in the computation of a firm's assessment rate and assessment levy.
- **Total Assessment Levy:** The total levy amount paid by firms as a result of their assessment rates.
- **New Firm Rate:** The new firm rate is a payroll weight average industry rate calculated within the rate model each year.
- **Estimated Number of Full Time Equivalent (FTE) Workers:** The number of full time equivalent workers has been estimated based on total gross worker earnings and Statistics Canada wage data.
- **Time Loss Injuries:** The number of accepted claims where a worker received a wage loss payment for missing time from work beyond the day of the injury due to a workplace injury. Fatalities are also included in the time loss count.
- **Injury rates:** Injury rates are calculated by dividing the number of injuries by the estimated number of FTE workers in the reporting year. Injury rates are expressed per 100 FTE workers.
- **Total Days Paid:** The number of days paid in the reporting year. It includes days paid on new injuries in the reporting year as well as injuries from previous years.
- **Current Year Injuries:** Injuries that occurred in the reporting year, i.e., new injuries.
- **Previous Years' Injuries:** Injuries that occurred in prior years to the reporting year that are still active, i.e., incurring direct costs and days paid.
- **CY Days Paid per TL Injury:** Current year injuries days paid in the reporting year divided by the number of time loss injuries in the reporting year.
- **CY Days Paid per FTE Worker:** Current year injuries days paid in the reporting year divided by the estimated number of FTE workers in the reporting year.
- **Total Days Paid per FTE Worker:** The number of days paid in the reporting year on all years' injuries divided by the estimated number of FTE workers in the reporting year.
- **Total Direct Costs Paid:** The direct costs paid on new injuries in the reporting year as well as injuries from previous years. It includes compensation (wage loss), rehabilitation (retraining and wage loss), medical aid costs (healthcare related costs) and impairment payments. Cost relief granted to firms is also included.

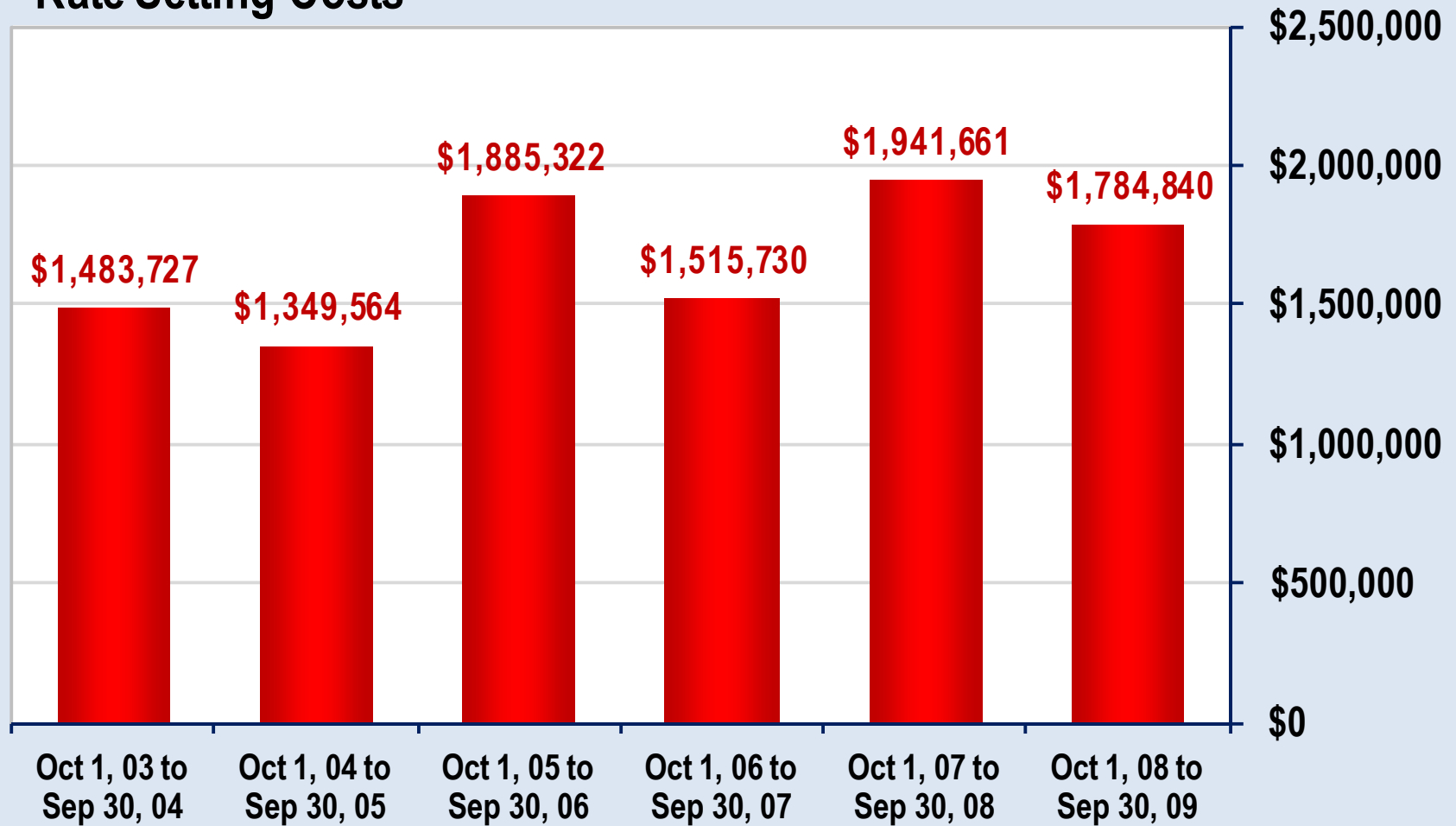


**SAFE
WORK**

SPOT THE HAZARD
ASSESS THE RISK
FIND A SAFER WAY
EVERYDAY

Manufacturing Agricultural Equipment

Rate Setting Costs



Rate setting costs include: Direct costs (wage loss, medical, rehabilitation, impairment payments) incurred in the 12 month rate setting window, i.e., Oct 1st to Sept 30th, and only claims that occurred within the last five years (57 months). For example, the 2010 rate setting costs included costs incurred between Oct 1, 2008 to Sept 30, 2009 from ongoing claims that occurred between Jan 1, 2005 and Sept 30, 2009.

Manufacturing Agricultural Equipment

Selected Injury Demographics for 2009

Gender	# Time Loss Injuries	Percent
Female	25	5.5%
Male	426	94.5%

Age Groups	# Time Loss Injuries	Percent
15 to 24	84	18.6%
25 to 34	125	27.7%
35 to 44	113	25.1%
45 to 54	94	20.8%
55+	35	7.8%

Top 5 by Occupation	# Time Loss Injuries	Percent
Welders and related machine operators	129	28.6%
Other labourers in processing, manufacturing and utilities	75	16.6%
Assemblers and inspectors, electrical appliance, apparatus and equipment manufacturing	60	13.3%
Other trades helpers and labourers	30	6.7%
Painters and coaters, industrial	30	6.7%

Top 5 by Body Part (Group)	# Time Loss Injuries	Percent
Back including spine & spinal cord	98	21.7%
Fingers	90	20.0%
Hands / wrists except fingers	43	9.5%
Other trunk (includes shoulder)	42	9.3%
Eyes	41	9.1%

Data Source - Annual Report Database, Feb 10



**SAFE
WORK**

SPOT THE HAZARD
ASSESS THE RISK
FIND A SAFER WAY
EVERYDAY

Manufacturing Agricultural Equipment

Selected Injury Demographics for 2009 (cont.)

Top 5 by Nature of Injury (Group)	# Time Loss Injuries	Percent
Sprains, strains, tears	203	45.0%
Surface wounds, bruises	79	17.5%
Open wounds	59	13.1%
Other traumatic injuries and disorders	36	8.0%
Fractures, dislocations	31	6.9%

(47.5% MSI's, 52.5% Non MSI's)

Top 5 by Source of Injury (Group)	# Time Loss Injuries	Percent
Parts and materials	187	41.5%
Bodily motion or position of worker	70	15.5%
Structures and surfaces	37	8.2%
Other sources	37	8.2%
Machinery	29	6.4%

Top 5 by Event or Exposure (Group)	# Time Loss Injuries	Percent
Struck by objects	114	25.3%
Overexertion	101	22.4%
Caught in objects	68	15.1%
Bodily reaction	46	10.2%
Rubbed or abraded	31	6.9%

Data Source - Annual Report Database, Feb 10

Definitions and Data Notes

Occupations are coded for time loss injuries using the National Occupational Classification (NOC) codes.

Part of Body Injured, MSI's, Source of Injury and Event or Exposure: The WCB records the details of injuries and illnesses based on the Canadian Standards Association (CSA) guidelines for coding occupational injury and disease information. In this report the codes have been grouped into categories.

MSI = Musculoskeletal injury. MSI's are injuries or disorders involving muscles, bones, tendons, blood vessels, nerves and other soft tissues such as sprains, strains, tears, tendonitis and bursitis.



**SAFE
WORK**

SPOT THE HAZARD
ASSESS THE RISK
FIND A SAFER WAY
EVERYDAY